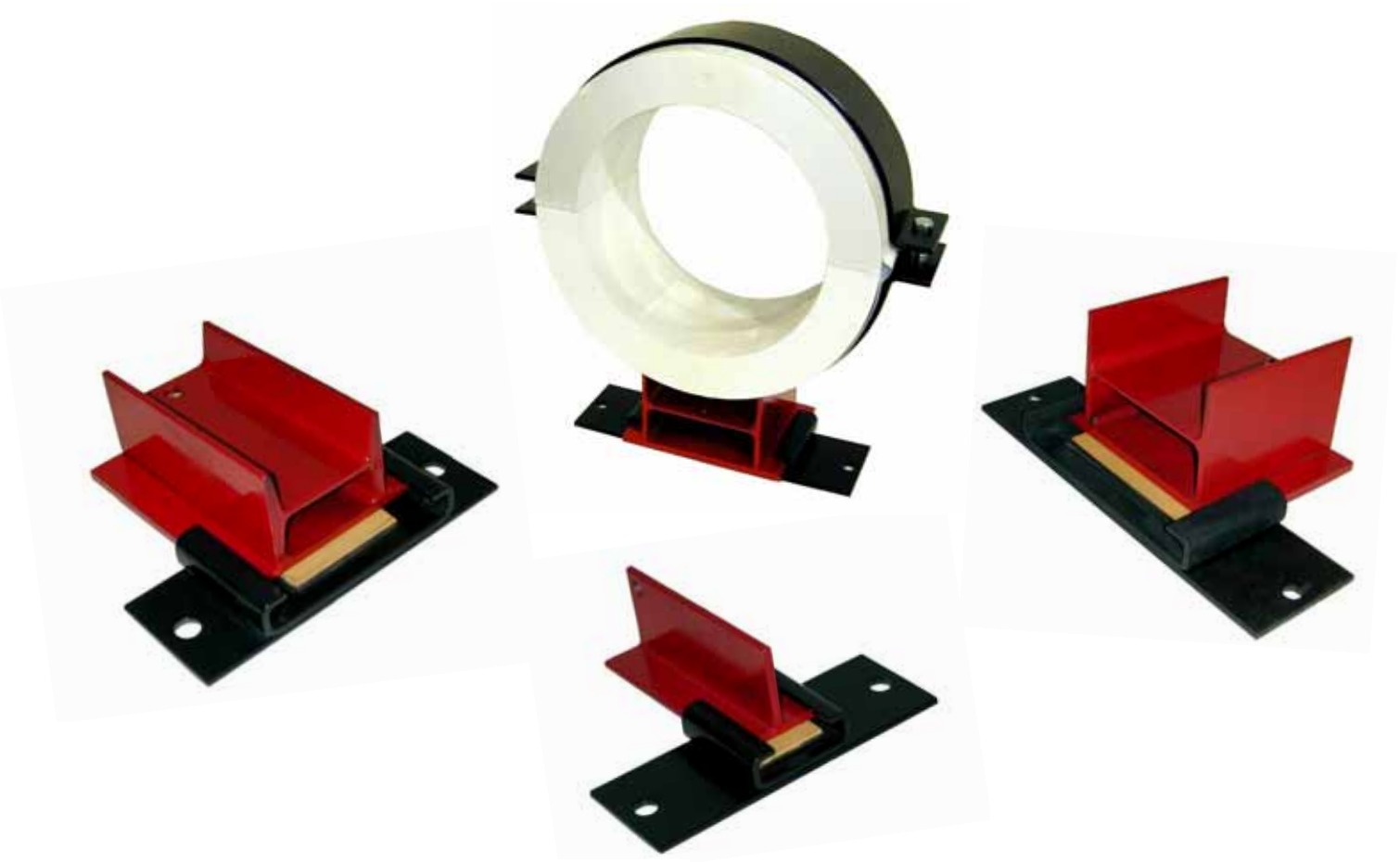




Tri-State Industries, Inc.

PIPE SLIDES



Since 1980 Tri-State Industries, Inc. has served the mechanical construction industry by providing the highest quality pipe supports, on time deliveries and outstanding customer service.

Our products out perform our competition and our commitment to service guarantees your satisfaction.

Pipe Slides

Tri-State slides are designed to ensure positive pipe alignment. This is accomplished by restricting lateral pipe movement while allowing for movement along the axis of the pipe. When expansion devices such as pipe loops, bellows joints and slip joints are used, pipe slides ensure proper operation of the expansion device and protect the integrity of the pipe.

A pipe slide assembly consists of an anchored base and a sliding section that is attached to the pipe. The slide moves over the base as the pipe expands and contracts.

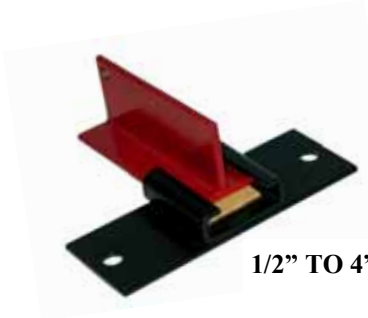
- Pipe slide assemblies are designed for pipe support as well as lateral and axial movement.
- Assemblies are fabricated using low friction bearing surfaces to minimize stress on pipe and support structures.
- Self-lubricating, chemically inert and maintenance-free.
- Pre-Insulated Models:
Save money by **“KEEPING ENERGY IN THE PIPE”**

DETERMINING YOUR PIPE SUPPORT NEEDS HAS NEVER BEEN EASIER



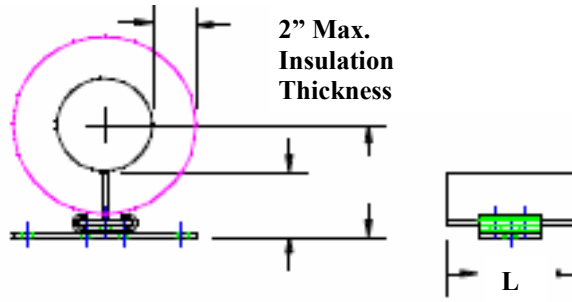
PTFE Guide Assemblies

WELDED SERIES

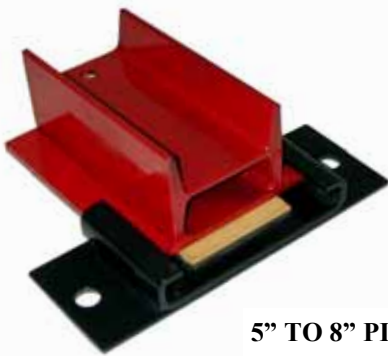


1/2" TO 4" PIPE

435 Series

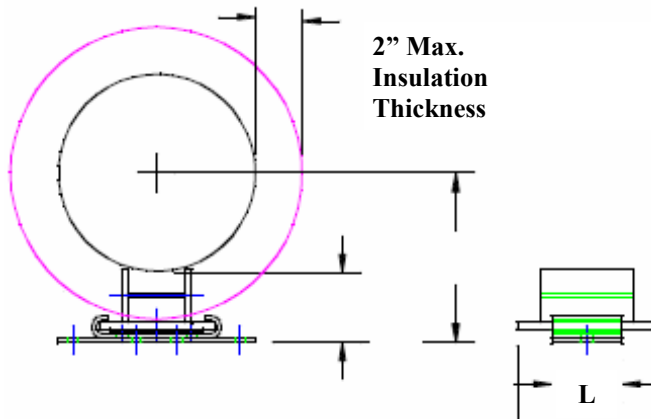


Max. Axial Movement	Model No.	L	Max. Insulation Thickness
4"	4351-4383B	6"	2"
10"	4352-4383B	12"	2"

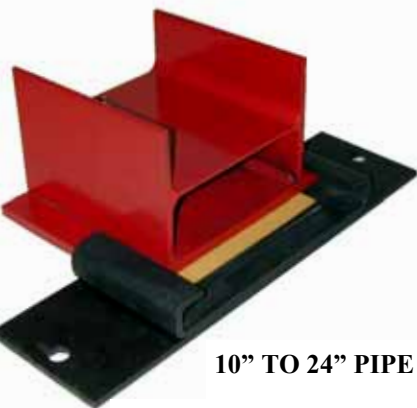


5" TO 8" PIPE

280 Series
Bolt down base

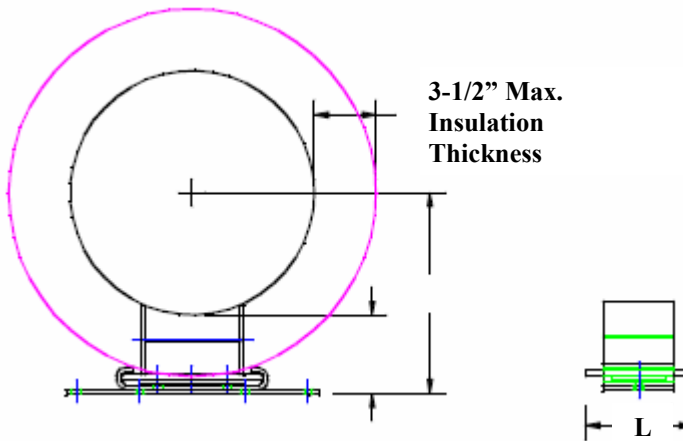


Max. Axial Movement	Model No.	L	Max. Insulation Thickness
4"	2801-4385B	6"	2"
10"	2802-4385B	12"	2"



10" TO 24" PIPE

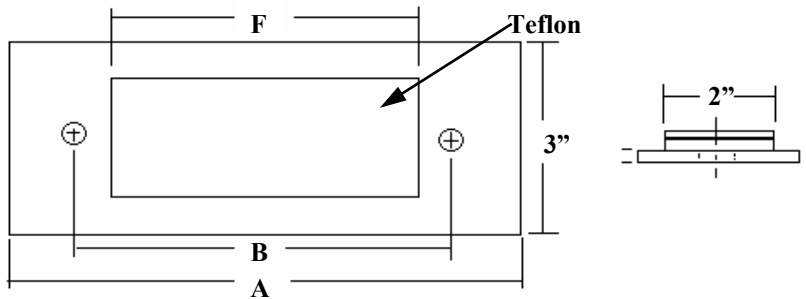
437 Series
Bolt down base



Max. Axial Movement	Model No.	L	Max. Insulation Thickness
4"	4371-4384B	6"	3-1/2"
10"	4372-4384B	12"	3-1/2"

PTFE Slide / Support Assembly

Series 438 base plates can be combined with Series 435, 280 and 437 slides when lateral movement exists in a piping system.



Model No.	A	B	F
xxxx-4381	8-1/2"	7"	6"
xxxx-4382	14-1/2"	13"	12"

PTFE Pipe Slide Assemblies

Tri-State PTFE pipe slide assemblies are designed to support the pipe and provide for lateral and axial movement due to thermal expansion and contraction of the piping system.

Slide bases are fabricated using PTFE slide bearings to provide a low coefficient of friction, minimizing frictional stress on the pipe and support structure.

The maximum load on the pipe slides is based on using a PTFE width of 2" for the slide plate and a 70°F temperature. For a different temperature at the bearing surface, multiply the maximum load rating by the following factor:

Temperature °F	Factor
≤ 70	1.00
100	.85
200	.55
300	.40
400	.25

PIPE SLIDE COMPONENTRY:

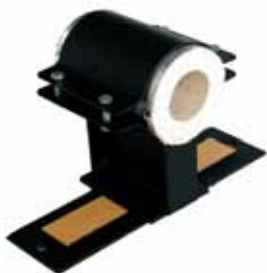
- Available materials: Carbon Steel and Stainless Steel
- Finish: 2 Mill thickness Powder-Coated (carbon steel only).
- Slide Pad: Heat Bonded P.T.F.E. (to carbon steel or stainless steel).
- Fasteners: Grade 2 (Industrial).

FEATURES / BENEFITS

- Axial Travel allowance: 4" or 10" are STANDARD
- Powder Coat Finish: Very durable (25,000 stroke, validated cycle test)
- Slide Pad: Provides low friction coefficient.
- Offers resistance to chemical corrosion, solvents, abrasion and impact.
- American Made

Cross-Reference Alternatives

Pre-Insulated Supports



Pipe Shields / Rilco

Tri-State Industries, Inc. manufactures equals and alternatives to many of these brand pipe slides:

- Rilco
- Pipe Shields
- Piping Technologies

For more information, call us at (219) 933-1710 or visit our Web site at www.tristateindustries.com

Teflon to Stainless Slides and Guides

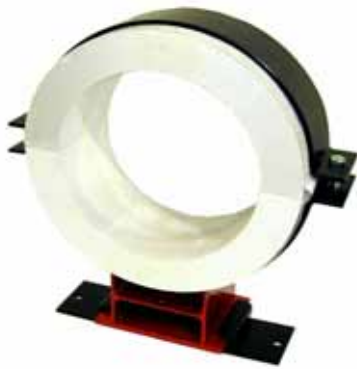


Grinnell Fig. 257

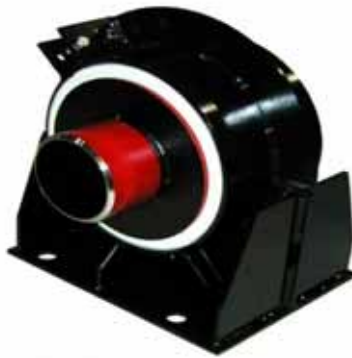
**DETERMINING YOUR
PIPE SUPPORT NEEDS
HAS NEVER BEEN EASIER**

Special Application Slides - Guides - Anchors

INS SERIES



PI-ANCHOR



EXTRA TRAVEL



257 SERIES



**FIN-TUBE GUIDE
BASEBOARD ANCHOR**



**ANCHOR
CLAMP**



Tri-State Industries, Inc.
4923 Columbia Avenue
Hammond, IN 46327
(219) 933-1710 • FAX (219) 933-1719
email: info@tristateindustries.com
www.tristateindustries.com