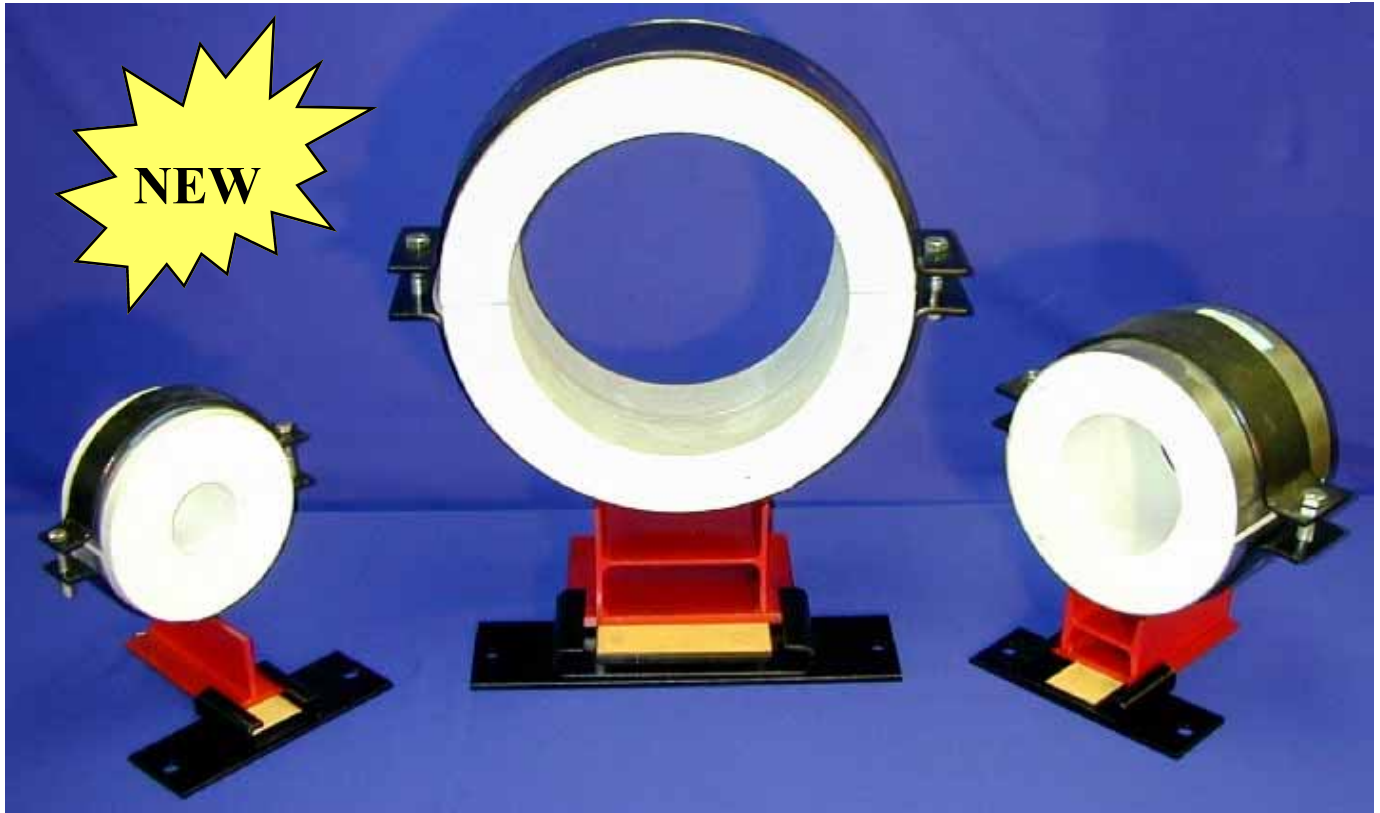




Tri-State Industries, Inc.

# PRE-INSULATED SLIDES

**“KEEPING ENERGY IN THE PIPE”**



Since 1980 Tri-State Industries, Inc. has served the mechanical construction industry by providing the highest quality pipe supports, exceptional on time deliveries and outstanding customer service. Our products out perform our competition and our commitment to service guarantees your satisfaction.

## Pre-Insulated *Pipe Slide / Guides*

Tri-State slide/guides are designed to ensure positive pipe alignment. This is accomplished by restricting lateral pipe movement while allowing for movement along the axis of the pipe. When expansion devices such as pipe loops, bellows joints and slip joints are used, pipe slide/guides ensure proper operation of the expansion device and protect the integrity of the pipe.

A pipe slide/guide assembly consists of an anchored base and a sliding section that is attached to the pipe. The slide moves over the base as the pipe expands and contracts.

## Tri-State Assemblies:

- Provide support for pipe and media as per (MSS) SP- 58 & SP-69.
- **Save Energy** with clean, continuous insulation through the guiding device. (See [www.tristateindustries.com](http://www.tristateindustries.com) for calculations).
- Insure a low-friction self-lubricating, maintenance free bearing surface minimizing stress on pipe and support structures.

**DETERMINING YOUR PIPE SUPPORT NEEDS HAS NEVER BEEN EASIER**



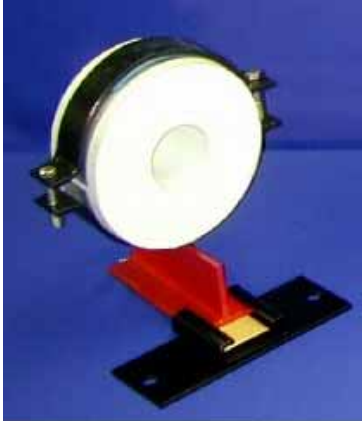
Tri-State Industries, Inc.  
 4923 Columbia Avenue  
 Hammond, IN 46327

Phone: 219-933-1710  
 Fax: 219-933-1719  
 Email: info@tristateindustries.com  
 Web: www.tristateindustries.com

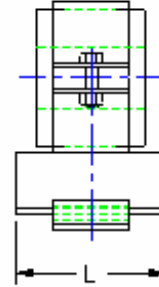
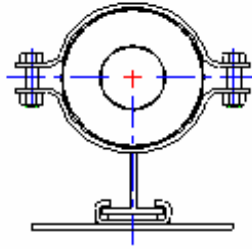
**Pre-Insulated**

**PTFE Slide/Guide Assemblies**

**BOLT DOWN**

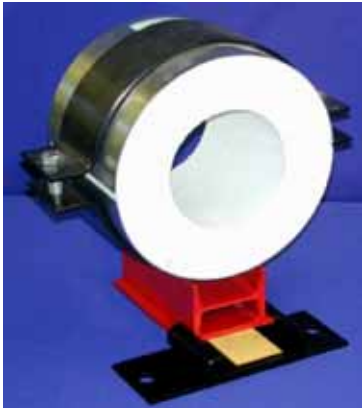


435 INS SERIES 1/2"- 3" PIPE

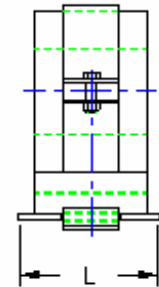
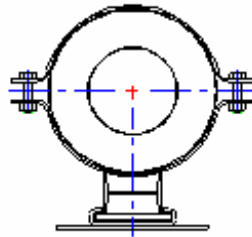


**435  
INS  
SERIES**

Max. Axial Movement	Model No.	L	Max. Insul. Thickness
4"	435-INS	6"	2"
10"	435-INS	12"	2"



280 INS SERIES 1/2"- 8" PIPE

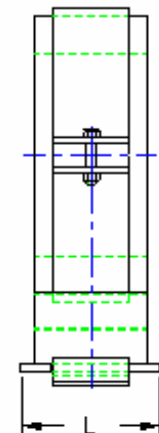
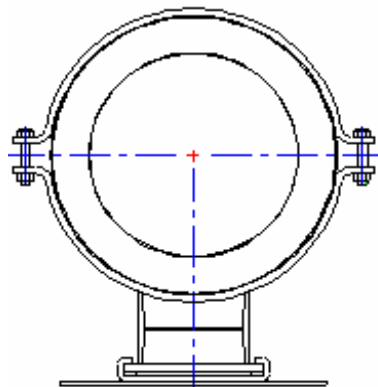


**280  
INS  
SERIES**

Max. Axial Movement	Model No.	L	Max. Insul. Thickness
4"	280-INS	6"	4"
10"	280-INS	12"	4"



437 INS SERIES 4" -16" PIPE



**437  
INS  
SERIES**

Max. Axial Movement	Model No.	L	Max. Insul. Thickness
4"	437-INS	6"	4"
10"	437-INS	12"	4"



# PRE-INSULATED GUIDE SERIES

## Ordering information

(Guide sizes not listed are available upon request.)



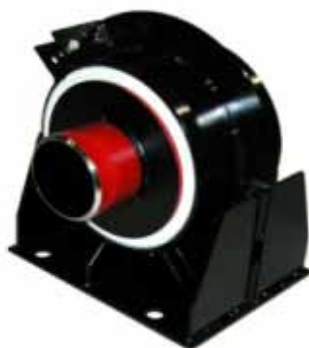
**435-INS SERIES**



**280-INS SERIES**



**437-INS SERIES**



**INS-ANCHOR**

Pipe Size	INSULATION THICKNESS						
	1"	1-1/2"	2"	2-1/2"	3"	3-1/2"	4"
1/2	004-10A-4	004-14C-4	004-20E-4	004-24G-4	004-30H-4	004-34I-4	004-40J-4
	-10	-10	-10	-10	-10	-10	-10
3/4	006-10A-4	006-14C-4	006-20E-4	006-24G-4	006-30H-4	006-34I-4	006-40J-4
	-10	-10	-10	-10	-10	-10	-10
1	010-10B-4	010-14D-4	010-20F-4	010-24G-4	010-30H-4	010-34I-4	010-40J-4
	-10	-10	-10	-10	-10	-10	-10
1-1/4	012-10B-4	012-14E-4	012-20F-4	012-24G-4	012-30I-4	012-34J-4	012-40K-4
	-10	-10	-10	-10	-10	-10	-10
1-1/2	014-10C-4	014-14E-4	014-20G-4	014-24H-4	014-30I-4	014-34J-4	014-40K-4
	-10	-10	-10	-10	-10	-10	-10
2	020-10D-4	020-14F-4	020-20G-4	020-24H-4	020-30I-4	020-34J-4	020-40K-4
	-10	-10	-10	-10	-10	-10	-10
2-1/2	024-10E-4	024-14G-4	024-20H-4	024-24I-4	024-30J-4	024-34K-4	024-40L-4
	-10	-10	-10	-10	-10	-10	-10
3	030-10F-4	030-14G-4	030-20H-4	030-24I-4	030-30J-4	030-34K-4	030-40L-4
	-10	-10	-10	-10	-10	-10	-10
4	040-10G-4	040-14H-4	040-20I-4	040-24J-4	040-30K-4	040-34L-4	040-40M-4
	-10	-10	-10	-10	-10	-10	-10
5	050-10H-4	050-14I-4	050-20J-4	050-24K-4	050-30L-4	050-34M-4	050-40N-4
	-10	-10	-10	-10	-10	-10	-10
6	060-10I-4	060-14J-4	060-20K-4	060-24L-4	060-30M-4	060-34N-4	060-40O-4
	-10	-10	-10	-10	-10	-10	-10
8	080-10K-4	080-14L-4	080-20M-4	080-24N-4	080-30O-4	080-34P-4	080-40Q-4
	-10	-10	-10	-10	-10	-10	-10
10	100-10M-4	100-14N-4	100-20O-4	100-24P-4	100-30Q-4	100-34R-4	100-40S-4
	-10	-10	-10	-10	-10	-10	-10
12	120-10O-4	120-14P-4	120-20Q-4	120-24R-4	120-30S-4	120-34T-4	120-40U-4
	-10	-10	-10	-10	-10	-10	-10
14	140-10P-4	140-14Q-4	140-20R-4	140-24S-4	140-30T-4	140-34U-4	140-40V-4
	-10	-10	-10	-10	-10	-10	-10
16	160-10R-4	160-14S-4	160-20T-4	160-24U-4	160-30V-4	160-34W-4	160-40X-4
	-10	-10	-10	-10	-10	-10	-10
18	180-10T-4	180-14U-4	180-20V-4	180-24W-4	180-30X-4	180-34Y-4	180-40Z-4
	-10	-10	-10	-10	-10	-10	-10
20	200-10V-4	200-14W-4	200-20X-4	200-24Y-4	200-30Z-4	RFQ	RFQ
	-10	-10	-10	-10	-10		
24	240-10Z-4					RFQ	RFQ
	-10	RFQ	RFQ	RFQ	RFQ	RFQ	RFQ

How to read this chart:

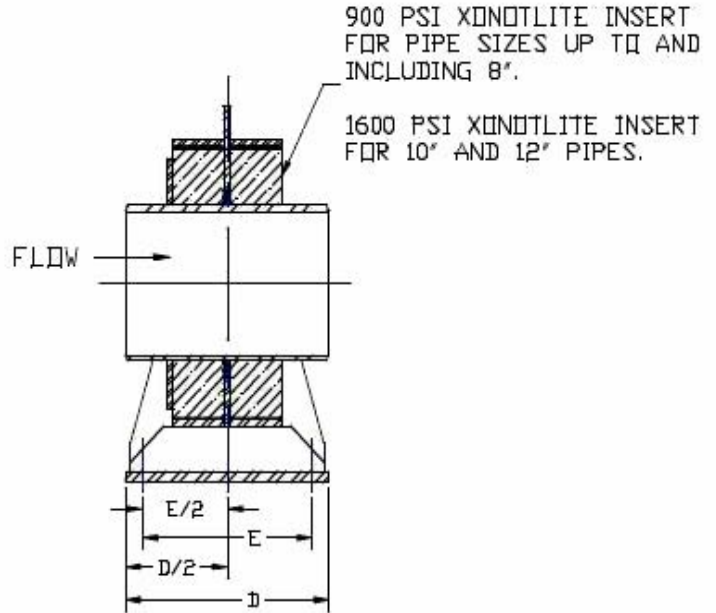
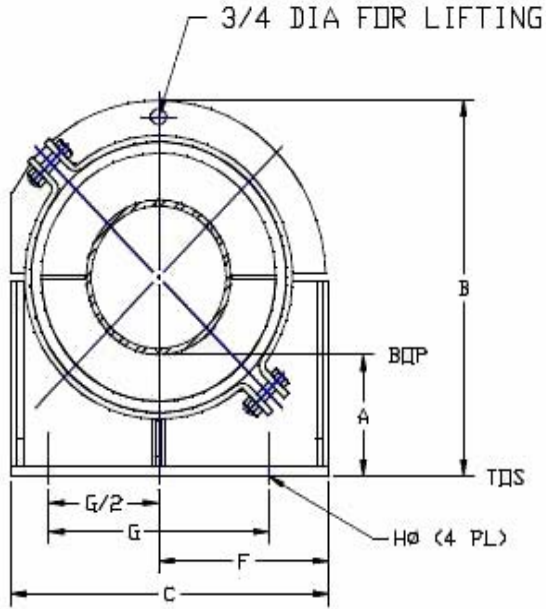
- \* Example: The correct part number for a 2" pipe with 3" Ins. and a required axial movement of 10" is **020-30I-10**
- \* Explanation of part number:
 

XXX-	XX-	X-	X
<b>280 - INS SERIES</b>	Pipe	INS.	Clamp
	Size	Size	Size
			Movement
- \* Use the 1" thickness column when no insulation is required.
- \* Copper tube application, (add -C to part number when ordering.)

(SEE BACK COVER FOR ANCHOR DRAWING AND SPECS)

# NEW PRODUCT PRE-INSULATED PI-ANCHOR SERIES

PATENT PENDING



PIPE SIZE (NOM. ID, INCHES)	ANCHOR ASSEMBLY PART NUMBER	THRUST LOAD MAXIMUM LBS FORCE	DIM A	DIM B	DIM C	DIM D	DIM E	DIM F	DIM G	DIM H
1 1/2	PI-AN-A-01.50	2,200	5.56	12.12	10.00	8.00	6.00	5.62	5.00	0.62
2	PI-AN-A-02.00	2,200	5.31	12.12	10.00	8.0	6.00	5.62	5.00	0.62
2 1/2	PI-AN-A-02.50	5,750	5.62	13.68	12.00	8.00	6.00	6.62	7.00	0.62
3	PI-AN-A-03.00	5,750	5.31	13.68	12.00	8.00	6.00	6.62	7.00	0.62
4	PI-AN-A-04.00	7,150	5.31	14.62	12.75	10.00	8.00	7.06	8.00	0.88
5	PI-AN-A-05.00	9,100	5.31	15.75	14.00	10.00	8.00	7.69	9.00	0.88
6	PI-AN-A-06.00	12,800	5.38	17.38	16.00	12.00	10.00	8.69	11.00	0.88
8	PI-AN-A-08.00	17,500	6.81	21.00	18.75	12.00	10.00	10.06	13.00	1.12
10	PI-AN-A-10.00	24,500	7.00	24.38	22.50	20.00	16.00	12.00	15.00	1.62
12	PI-AN-A-12.00	30,500	7.18	26.50	24.50	22.00	18.00	12.94	17.00	1.62



Tri-State Industries, Inc.  
4923 Columbia Avenue, Hammond, IN 46327  
Phone: 219-933-1710 Fax: 219-933-1719

## Pre-Insulated Anchor Submittal Drawing

Approved by:  
DEK

Date:  
10/14/05

Tolerance  
2 Place +/- Fract. +/- 1/16  
3 Place +/- Angular +/-

Material: Carbon Steel  
Finish: Powder Coat  
Drawing Number:  
PI-AN-S REV: 2

